



“Holiday Cards in a Snap!”
Designer: Susan Weinroth

Crafting cards – especially for the holidays – is one of my favorite projects to tackle. I like to design one card, and then replicate it for an entire list of recipients. I’ve created 3 cards here – all based on a single sketch – that can each be easily recreated for everyone on your list. I’ll share the steps for each card in this tutorial, as well as a handful of helpful tips along the way to make recreating many cards at once a snap!



Supply List:

Fiskars: 67517197 Classic No. 5 Micro-Tip Scissors

Fiskars: 48007097 Ultra Shape Xpress

Fiskars: 48507097 Circles Template

Fiskars: 92017097 Scallop Paper Edgers

Fiskars: 01-005122 Border-Corner Snowbubbles

Fiskars: 01-004596 Scallop Sentiment Border Punch

Fiskars: 01-001045 Threading Water Border Punch

Fiskars: 12-25637097 Pop Up Punch Circle

Fiskars: 12-74397097 Brick by Brick Medium Squeeze Punch

Fiskars: 12-74327097 Nice Tri Large Squeeze Punch

Fiskars: 12-74247097 Round N Round Large Squeeze Punch

Fiskars: 12-74147097 Round N Round Extra Large Squeeze Punch

Fiskars: 12-74417097 Twinkle Twinkle Medium Squeeze Punch

Fiskars: 12-99087097 Portable Rotary Trimmer

Fiskars: 12-73267097 Press Star Now Extra Large Squeeze Punch

Fiskars: 01-003719 Tis the Season Clear Stamps – Lil Davis

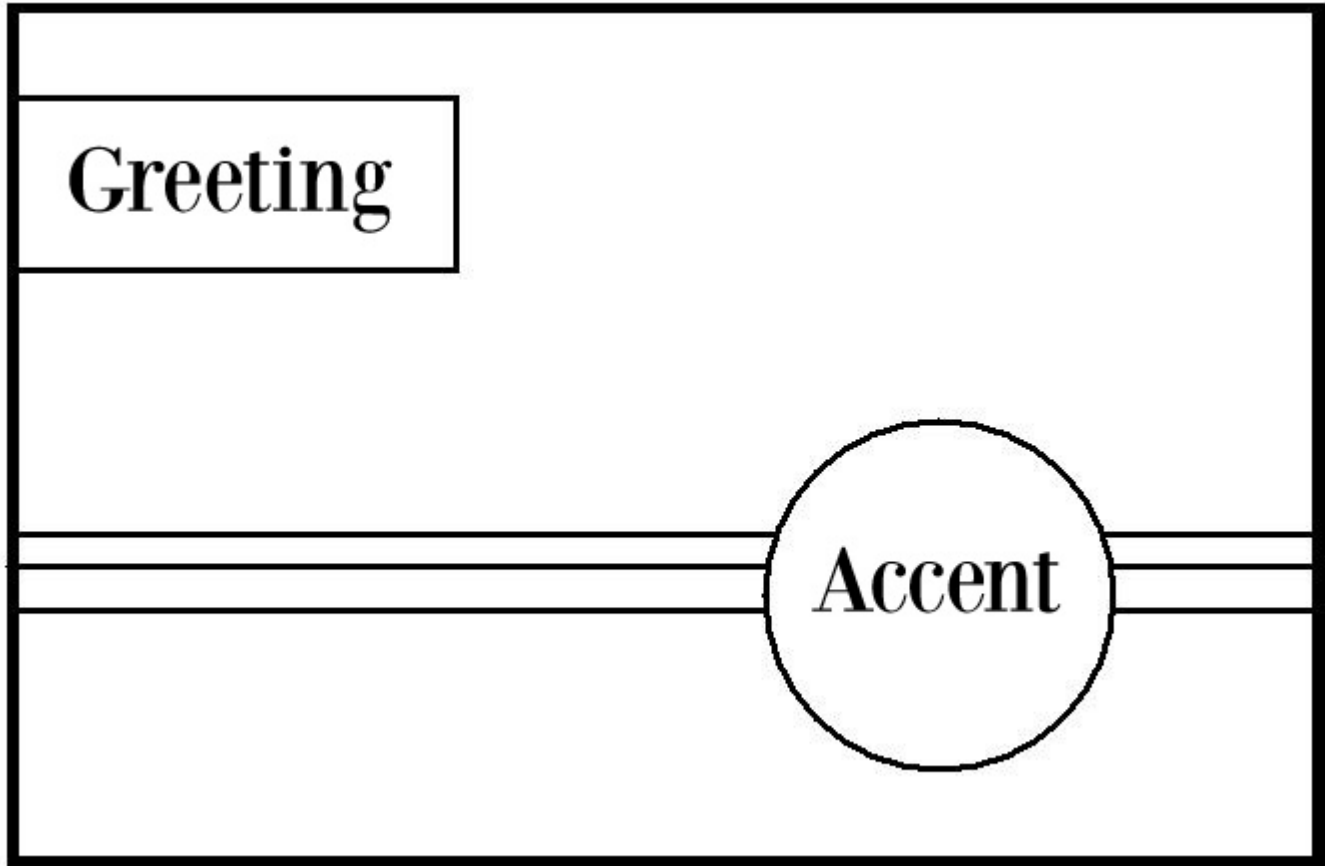
Fiskars: 01-000068 Stamp Block Set

Fiskars: 12-25987097 Adhesive Foam Squares

Fiskars: 12-73307097 Round the Bend Corner Squeeze Punch

Other: patterned paper (Basic Grey, American Crafts), cardstock, brad, embossing powder (Zing!), embossing ink, ribbon (American Crafts), adhesive rhinestones (Queen & Co.)

Here is the sketch that I created to work from for each card:



Prepare:

Start by gathering the supplies and tools that you will need for each card. I will list the supplies for each under the name of each card. I find assembly line style production of cards to go the quickest for me – so what I suggest is that you read through the instructions for each, and see what you can focus on for the time that you have available. For example choose a part of the card such as the embellishment, and make all of those at once, then set aside and do something like trim all papers to the correct measurements the next time you have a chance to work on your cards.. It will greatly help to streamline your assembly process!



Happy Holidays Photo Card:

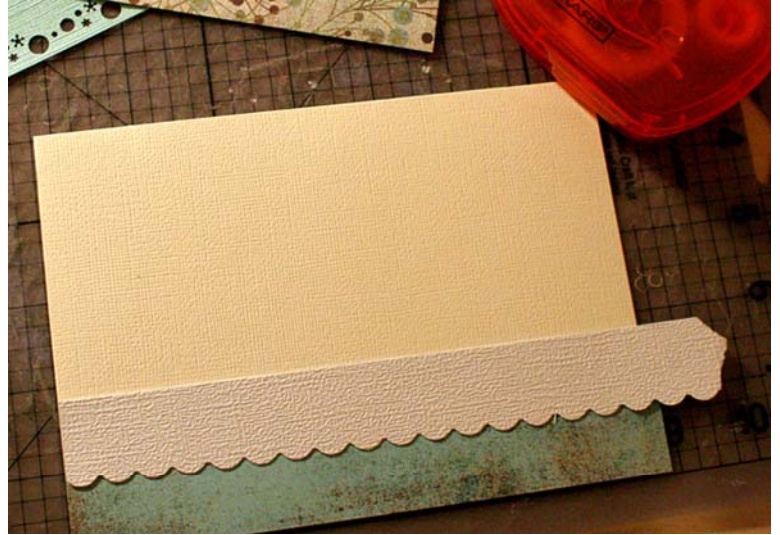
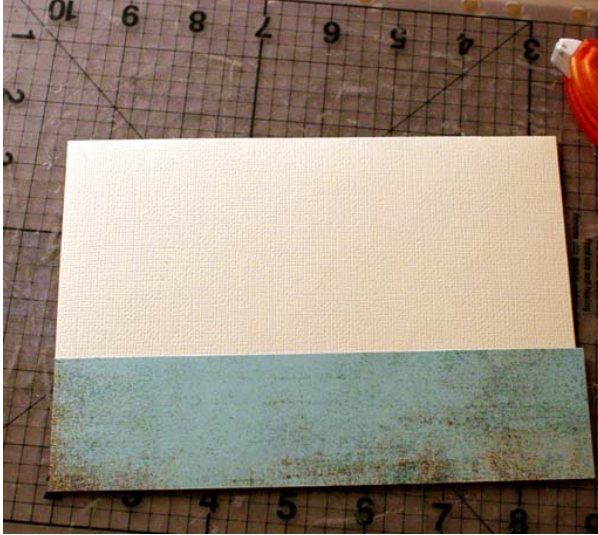
With a general holiday greeting, this card is perfect for anyone on your list. The photo adds such a warm touch of personalization to this classic card. Rhinestones are not needed if you'd like to cut out a step, I just liked the winter "sparkle" that they added to the design. I find it easiest to use 5x7 inch card bases – premade/prefolded – to construct my cards with. If you choose not to do this, instead measure a piece of cardstock to 10x7, fold and score.

1. Create your photo embellishment: Start by either using a small photo OR sizing your photo to a 2.1 x 2.1 inch square with photo editing software. Have photos printed and then use the XL Round N Round Squeeze Punch to punch photos out. Save time by punching ALL your photos at once.



2. Use the Ultra Shape Xpress tool and circle shape template to trim a 2.5 inch circle from blue paper. Save time by cutting all of your blue circles at once.

3. Adhere photo circle to blue circle, slightly off-centered, and then rhinestones around top edge. Place foam squares on the back. Set photo embellishment aside.
4. Punch an 8 x .75 inch strip of blue cardstock using the Snowbubble border & corner punch. (just use border part)
5. Punch an 8 x 1 inch strip of white cardstock using the scallop sentiment border punch. Trim a 7 x 1.75 inch piece of blue paper. Trim a 7 x 3.25 inch piece of holiday patterned paper.
6. Assemble card base: Adhere blue paper to bottom of card.



7. Adhere white scallop strip at top of blue paper. Then adhere Snowbubble strip over white, so that white scallop will peek out the bottom.



8. Adhere holiday print patterned paper to top of card. Then trim excess edges of card – I always find it easiest to let my strips overlap a bit off of the edge of my card. Simply line the edge of your card base up with the trimming line on your trimmer, and trim away the excess.

9. Trim strip of ribbon, adhere to card and trim ends using the Microtip No.5 scissors. Then adhere photo embellishment to card, and add small rhinestones to the “bubbles” in the Snowbubbles punched border.



10. Stamp greeting onto blue cardstock using the Fiskars stamping block. Either use a decorative ink, or use an embossing ink with heatset embossing powder as I did. Save time by stamping all of your greetings at once.



11. Finish card by attaching your greeting strip to the upper left hand corner of your card.

Supplies used on this card: patterned paper, cardstock, ribbon, photo, rhinestones, embossing ink and powder, adhesive foam squares, adhesive, circle template and Ultra Shape Xpress, XL Round N Round squeeze punch, Snowbubbles border punch, scallop sentiment border punch, trimmer, stamp block





Constructing Merry Christmas Card:

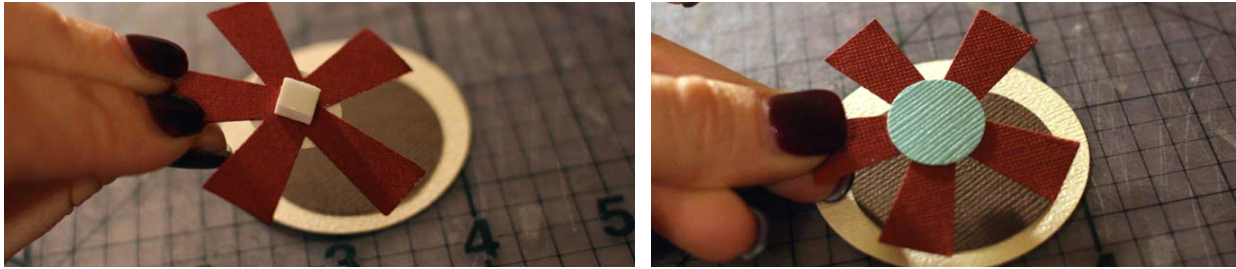
This card is simple but packs a lot of punch with the punched and pieced embellishments. I've turned the sketch on its side to show you another variation on a classic design. Card base is 5 x 7 closed.

1. Create your sparkle star embellishments. Using the press star now squeeze punch, circle pop up punch, and XL & L Round N Round squeeze punches, punch two sets from cardstock colors as shown:



2. Assemble and adhere L circle on XL circle, and pop up circle on star punch.

3. Place small adhesive foam square on the back of star and adhere to the middle of circles. Place foam adhesive on the back on embellishment. Add rhinestones to the center of star circle. Repeat process for each color set. Save time by making all of your star embellishments at once.

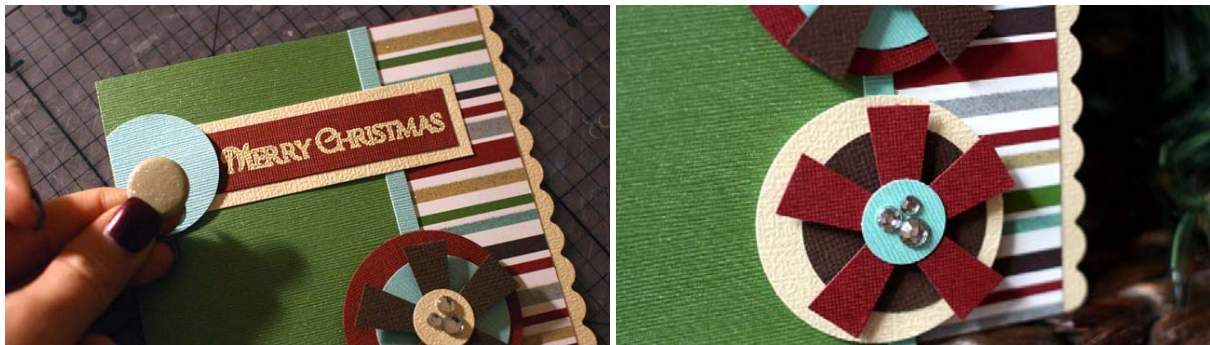


4. Trim 5x7 standard card base to 4.75 x 7 – this will allow the card plus scallop edge (that we will add later) to still fit in it's envelope.

5. Trim all pieces of paper for the card. Trim 8 x .75 inch strip of ivory scallop cardstock border, 7 x 1.5 inch piece of stripe paper, 7 x 3.25 piece of green cardstock, 7 x .25 strip of blue cardstock.



6. Assemble layers. First adhere ivory scallop border to right edge of card, so that scallops overlap off of the edge. Then attach stripe paper all the way at the right over scallops. Adhere green cardstock flush with right side of the card. Finally adhere strip of aqua blue cardstock where green and stripe paper meets.



7. Trim excess strips from edge of card using trimmer. Add star embellishments to the bottom of your card. Using either a decorative ink or embossing ink with embossing powder (as I did), stamp greeting onto maroon cardstock, trim and then matte onto ivory cardstock. Adhere to top of card, and then add a partially punched L Round N Round circle to the side, flush with the left edge of the card. Add a brad on top of the circle.

Supplies used on this card: patterned paper, cardstock, rhinestones, embossing ink and powder, brad, adhesive foam squares, adhesive, XL Round N Round squeeze punch, L Round N Round squeeze punch scallop sentiment border punch, trimmer, pop up circle punch, stamp block, Press Star Now squeeze punch



Christmas Tree Card:

This card uses a few standard punches to make a cute little Christmas tree embellishment. I've used the same sketch, and only modified the card size – using a 6x6 card base instead of the 5x7 for the 2 previous cards. Feel free to customize the greeting that is peeking up at the top of the card – so many fun sayings would work well here!



1. Start by punching all the pieces you will need for your tree. Save time by punching all pieces of each color at the same time and make piles of each for later assembly.

2. Create the tree accent: Use the Ultra ShapeXpress and circle template to trim a 3 inch circle from ivory cardstock. Layer three triangle punches on top of each other adhering to ivory circle, stacked vertically as shown, with brick punch underneath at bottom as tree “trunk”. Use small foam square to adhere star punch to top of tree. Then adhere ivory circle to green cardstock. Use scallop paper edgers to trim around the edge of the circle as shown. Place foam adhesive squares on the back of the tree embellishment circle.



3. Trim the paper needed for the card base – 3 x 6 inch piece of blue paper, 7 x .75 inch strip of maroon cardstock border punched with the threading water punch, 2.25 x 6 inch piece of the tree patterned paper, and a 6 x .25 strip of green cardstock.



4. Adhere blue paper to top of card, and then threading water border strip at bottom of blue with scallops pointing upwards. Then adhere tree paper to bottom of card and green cardstock strip at top of tree paper. Use the trimmer to trim of any excess paper and strips from the edge of the card.

5. Adhere tree circle embellishment to front right side of card. Use the Round the Bend corner rounder punch to round the top right corner of the card.

6. Stamp greeting onto ivory cardstock using either a decorative ink or embossing ink with embossing powder (as I did), trim and then matte onto green cardstock. Tuck greeting into scallop border at top of card, and secure lightly with adhesive.



Supplies used on this card: patterned paper, cardstock, rhinestones, embossing ink and powder, adhesive foam squares, adhesive, threading water border punch, Ultra ShapeXpress and circle template, scallop paper edgers, M Twinkle Twinkle squeeze punch, trimmer, stamp block, round the bend corner squeeze punch